



# Install MiLight with the Tuya App

## Set Up the 2.4G Gateway (WL-BOX2)

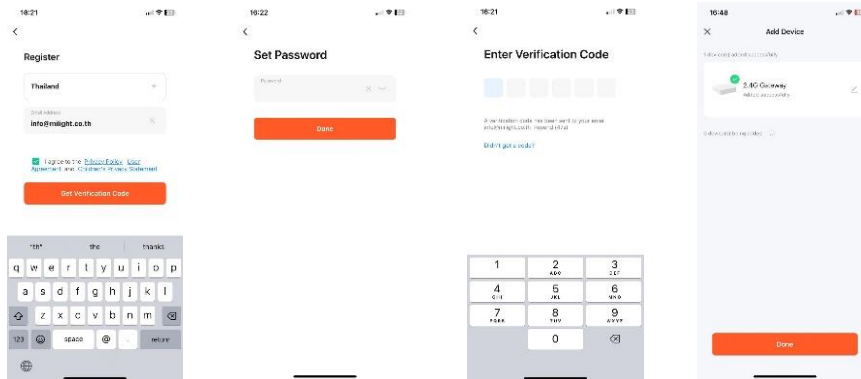
To control the MiLight lights with the Tuya app on your phone or tablet, you need the WL-BOX2 and the Tuya app. Follow the steps below for easy installation:

### 1. Download the Tuya App:

- Go to Google Play Store or Apple App Store and search for 'Tuya Smart.'

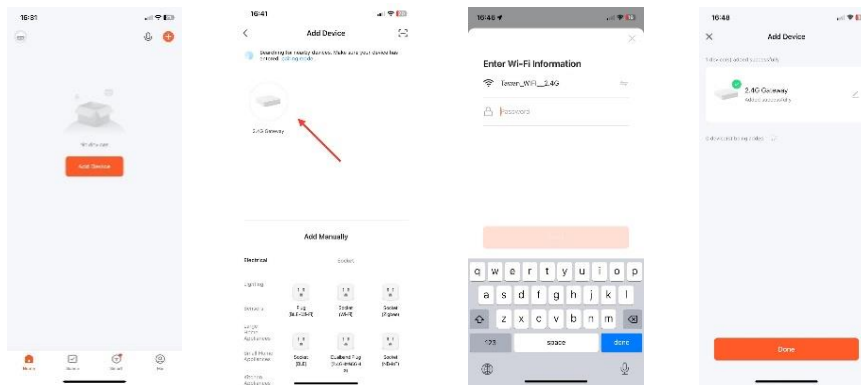


- Sign up by choosing your country, entering your email address, and following the verification process. Set a password after verification.



## 2. Add Devices:

- Before adding a device, ensure you are connected to your 2.4G WiFi and your Bluetooth is on. Bluetooth helps find new devices automatically.
- Plug in your WL-BOX2 WiFi box (2.4G Gateway).
- The Tuya app should automatically detect the new 2.4G Gateway. If it doesn't, follow the troubleshooting steps below.



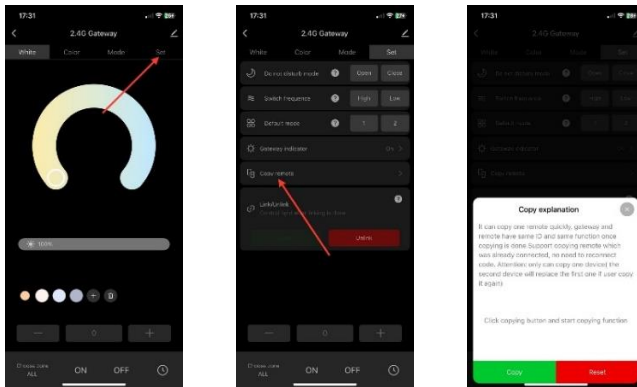
## 3. Troubleshooting:

- Step 1: If the 2.4G Gateway doesn't pop up, unplug it, turn off and on your Bluetooth, and try again.
- Step 2: If Step 1 fails, press the SET button on the Gateway for 2 seconds until the SYS light blinks red. Click the 'Add Devices' button in the Tuya app.
- Step 3: If Step 2 fails, press the SET button for 2 seconds until the SYS light blinks red. Click the '+' button in the app, go to 'Add Manually', select 'Lighting', then 'Light Source (BLE + Wi-Fi)', and follow the prompts.
- Step 4: If the Gateway is still not added, contact MiLight Thailand for support.

# Pairing the Lights within the Tuya App

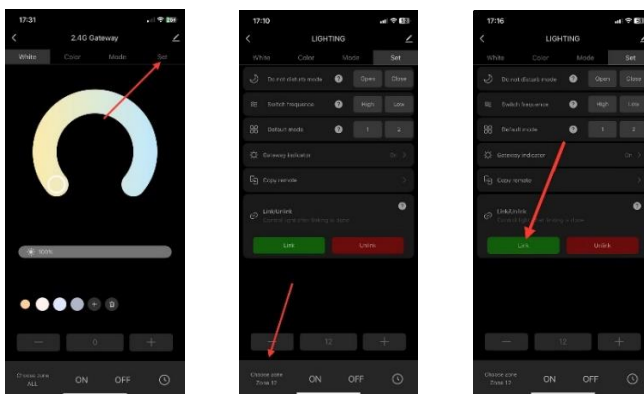
## 1. Copy Remote Controller Settings:

- If you have already paired your lights with a MiLight remote controller (like the FUT089) and want the same groupings, select SET > COPY REMOTE in the app, click the green COPY button, and press any button on the remote controller.



## 2. Pairing Lights:

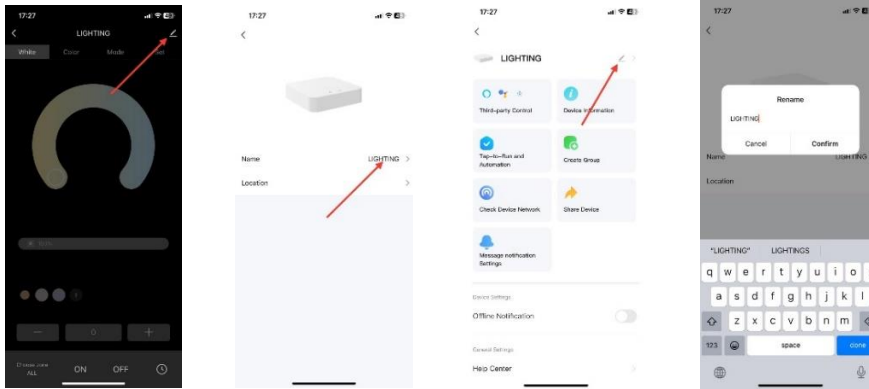
- Select SET in the app.
- Choose the zone to add lights to.
- Switch off the electricity to the lights for 10 seconds, then switch it back on. Click the green link button within 3 seconds.
- The lights will blink 3 times green to confirm pairing.
- Repeat the steps for additional lights.
- To unpair lights and reset them to factory settings, follow the same steps but click the red UNLINK button. The lights will blink 10 times red to confirm.



# Other Features

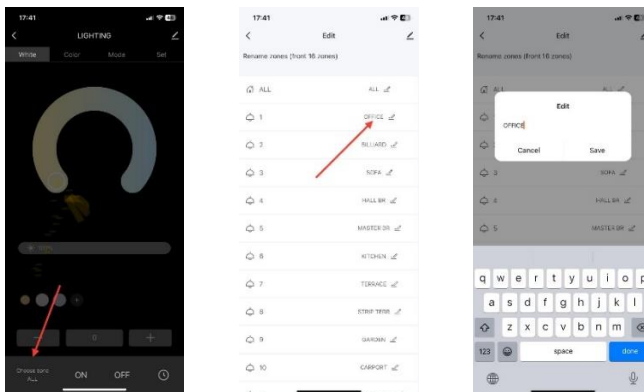
## 1. Renaming 2.4G Gateway:

- When managing multiple WiFi boxes, it's useful to rename them logically. In the app's opening screen, you can see an overview of renamed WiFi boxes.



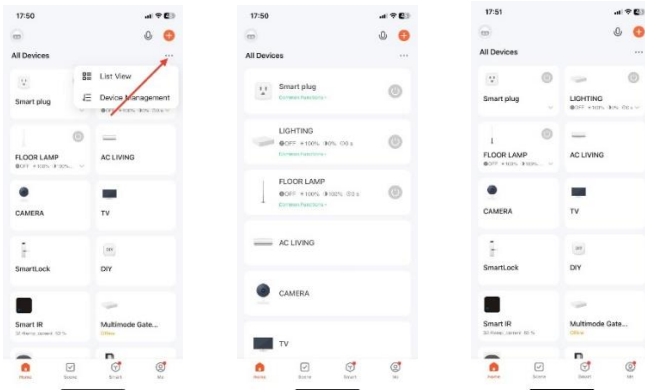
## 2. Renaming Zones:

- Hold the 'Choose Zone' button until a new screen appears, then follow the steps to rename zones.



### 3. Changing Home Screen View:

- Toggle between list view and grid view by clicking the 3 dots in the app.



### 4. Timer Feature:

- Set a timer to switch zones on or off at specific times.
  - In the timer settings:
    - Set the time.
    - Select the days for the timer.
    - Choose the zones for the timer.
    - Toggle the switch to on or off.

